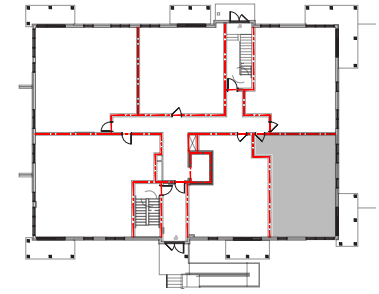


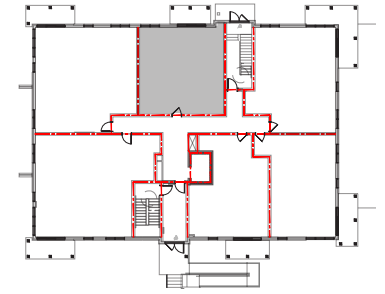
UNITÉ B - SUPERFICIE NET (HABITABLE) ± 684 PI.CA. - SUPERFICIE BRUT ± 750 PI.CA.

1 VESTIBULE	± 7'-5" X 5'-0"	4 CHAMBRE	± 9'-7" X 10'-0"	7 WALK-IN	± 8'-9" X 4'-11"
2 CUISINE	± 8'-3" X 10'-0"	5 SALLE DE BAIN	± 12'-0" X 6'-2"		
3 SALON ET SALLE À MANGER	± 12'-9" X 15'-1"	6 BUANDERIE	± 3'-9" X 6'-1"		



UNITÉ C - SUPERFICIE NET (HABITABLE) ± 704 PI.CA. - SUPERFICIE BRUT ± 765 PI.CA.

1	VESTIBULE	± 5'-4" X 6'-4"	4	SALLE À MANGER	± 12'-5" X 9'-10"	7	SALLE DE BAIN	± 5'-10" X 10'-6"
2	CHAMBRE	± 10'-0" X 9'-8"	5	CUISINE	± 8'-3" X 11'-4"			
3	SALON	± 12'-5" X 9'-2"	6	BUANDERIE	± 4'-6" X 3'-0"			



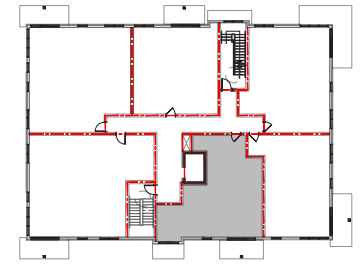
UNITÉ E - SUPERFICIE NET (HABITABLE) ± 747 PI.CA. - SUPERFICIE BRUT ± 804 PI.CA.

- | | | | | | |
|-------------------------|------------------|--------------------|-------------------|------------------------|------------------|
| 1 VESTIBULE | ± 5'-4" X 5'-2" | 4 SALON | ± 15'-0" X 10'-9" | 7 SALLE DE BAIN | ± 7'-2" X 12'-0" |
| 2 CUISINE | ± 11'-6" X 8'-3" | 5 CHAMBRE 1 | ± 11'-4" X 11'-0" | | |
| 3 SALLE À MANGER | ± 15'-0" X 8'-7" | 6 BUANDERIE | ± 3'-7" X 5'-3" | | |



UNITÉ E





UNITÉ H - SUPERFICIE NET (HABITABLE) ± 779 PI.CA. - SUPERFICIE BRUT ± 856 PI.CA.

1 VESTIBULE	± 7'-5" X 5'-0"	4 CHAMBRE	± 9'-8" X 10'-1"	7 SALLE DE BAIN	± 12'-0" X 6'-1"
2 CUISINE	± 8'-3" X 10'-0"	5 BUREAU	± 7'-9" X 5'-2"	8 BUANDERIE	± 3'-9" X 6'-0"
3 SALON ET SALLE À MANGER	± 12'-9" X 17'-2"	6 WALK-IN	± 7'-9" X 6'-0"	9 WALK-IN	± 8'-9" X 4'-11"