

SUPERFICIE HABITABLE TOTALE 1229 PI.CA. = ESPACE DE VIE 1009 PI.CA. + BALCON 220 PI.CA.

- | | | | |
|------------------------|-----------------|------------------------|------------------|
| 1 CHAMBRE | 12'-0" X 12'-4" | 5 SALLE DE BAIN | 13'-6" X 8'-6" |
| 2 CHAMBRE | 9'-1" X 10'-0" | 6 CUISINE | 15'-8" X 8'-4" |
| 3 SALLE DE BAIN | 5'-4" X 9'-2" | 7 SALON / S-À-M | 17'-7" X 14'-11" |
| 4 WALK-IN | 3'-8" X 9'-2" | | |



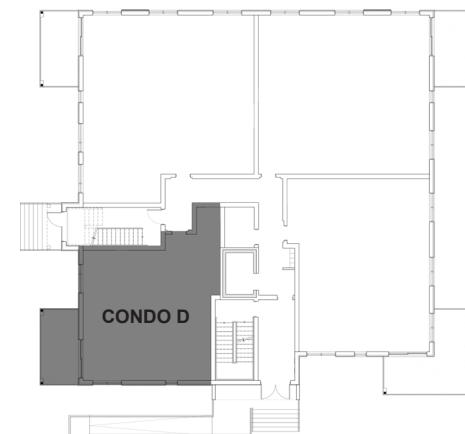
SUPERFICIE HABITABLE TOTALE 1304 PI.CA. = ESPACE DE VIE 1176 PI.CA. + BALCON 128 PI.CA.

- 1** CHAMBRE 12'-0" X 12'-3"
- 2** CHAMBRE 11'-10" X 12'-5"
- 3** SALLE DE BAIN 8'-1" X 8'-7"
- 4** SALLE DE BAIN 5'-0" X 12'-3"
- 5** SALON / S-À-M 14'-11" X 20'-5"
- 6** CUISINE 8'-4" X 14'-9"
- 7** WALK-IN 5'-10" X 7'-2"



SUPERFICIE HABITABLE TOTALE 1401 PI.CA. = ESPACE DE VIE 1273 PI.CA. + BALCON 128 PI.CA.

1 CHAMBRE	11'-8" X 12'-1"	5 CUISINE	8'-4" X 14'-9"
2 CHAMBRE	11'-4" X 9'-1"	6 SALON / S-À-M	15'-4" X 20'-0"
3 CHAMBRE	13'-8" X 9'-2"	7 WALK-IN	7'-4" X 5'-7"
4 SALLE DE BAIN	12'-4" X 5'-0"	8 SALLE DE BAIN	11'-10" X 9'-3"

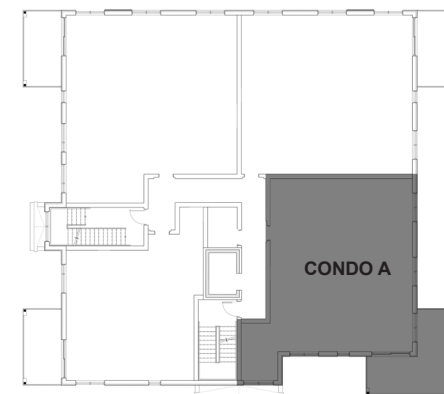


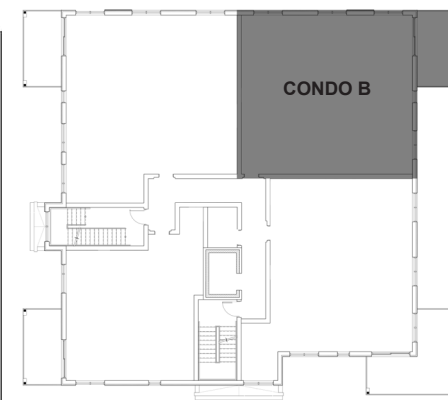
SUPERFICIE HABITABLE TOTALE 932 PI.CA. = ESPACE DE VIE 804 PI.CA. + BALCON 128 PI.CA.

- 1** CHAMBRE 11'-1" X 12'-5"
- 2** CUISINE 14'-4" X 8'-5"
- 3** SALLE DE BAIN 5'-6" X 12'-3"
- 4** SALON / S-À-M 15'-1" X 18'-8"

**SUPERFICIE HABITABLE TOTALE 1366 PI.CA. =
ESPACE DE VIE 1146 PI.CA. + BALCON 220 PI.CA.**

- 1** CHAMBRE 12'-0" X 12'-4"
- 2** CHAMBRE 12'-2" X 9'-0"
- 3** SALLE DE BAIN 8'-4" X 7'-0"
- 4** WALK-IN 4'-12" X 9'-2"
- 5** SALLE DE BAIN 13'-6" X 8'-6"
- 6** CUISINE 16'-11" X 8'-4"
- 7** SALON / S-À-M 17'-0" X 14'-11"
- 8** WALK-IN 4'-7" X 8'-0"





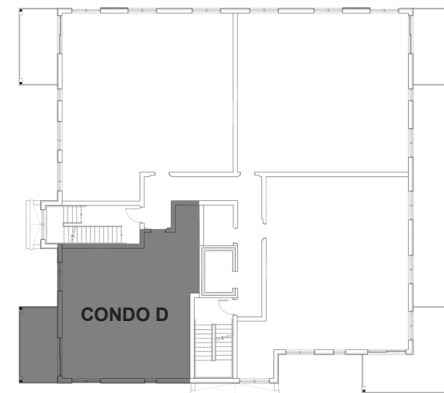
SUPERFICIE HABITABLE TOTALE 1304 PI.CA. = ESPACE DE VIE 1176 PI.CA. + BALCON 128 PI.CA.

- 1** CHAMBRE 12'-0" X 12'-3"
- 2** CHAMBRE 11'-10" X 12'-5"
- 3** SALLE DE BAIN 8'-1" X 8'-7"
- 4** SALLE DE BAIN 5'-0" X 12'-3"
- 5** SALON / S-À-M 14'-11" X 20'-5"
- 6** CUISINE 8'-4" X 14'-9"
- 7** WALK-IN 5'-10" X 7'-2"



SUPERFICIE HABITABLE TOTALE 1401 PI.CA. = ESPACE DE VIE 1273 PI.CA. + BALCON 128 PI.CA.

1	CHAMBRE	11'-8" X 12'-1"	5	CUISINE	8'-4" X 14'-9"
2	CHAMBRE	11'-4" X 9'-1"	6	SALON / S-À-M	15'-4" X 20'-0"
3	CHAMBRE	13'-8" X 9'-2"	7	WALK-IN	7'-4" X 5'-7"
4	SALLE DE BAIN	12'-4" X 5'-0"	8	SALLE DE BAIN	11'-10" X 9'-3"



SUPERFICIE HABITABLE TOTALE 932 PI.CA. = ESPACE DE VIE 804 PI.CA. + BALCON 128 PI.CA.

- 1** CHAMBRE 11'-1" X 12'-5"
- 2** CUISINE 14'-4" X 8'-5"
- 3** SALLE DE BAIN 5'-6" X 12'-3"
- 4** SALON / S-À-M 15'-1" X 18'-8"